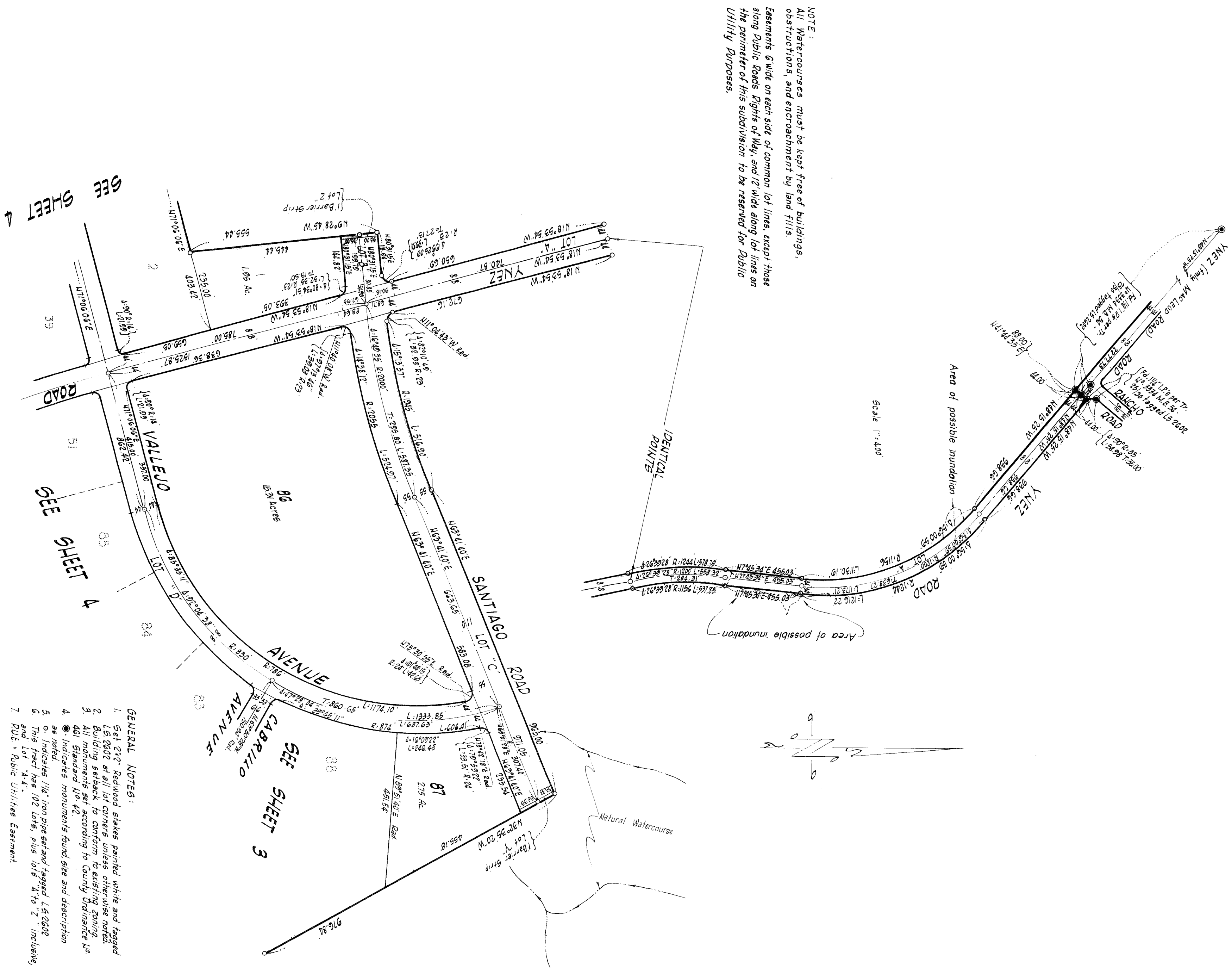


In The County of Riverside
TRACT No. 3552
BEING A SUBDIVISION OF A PORTION OF THE RANCHO TEMECULA

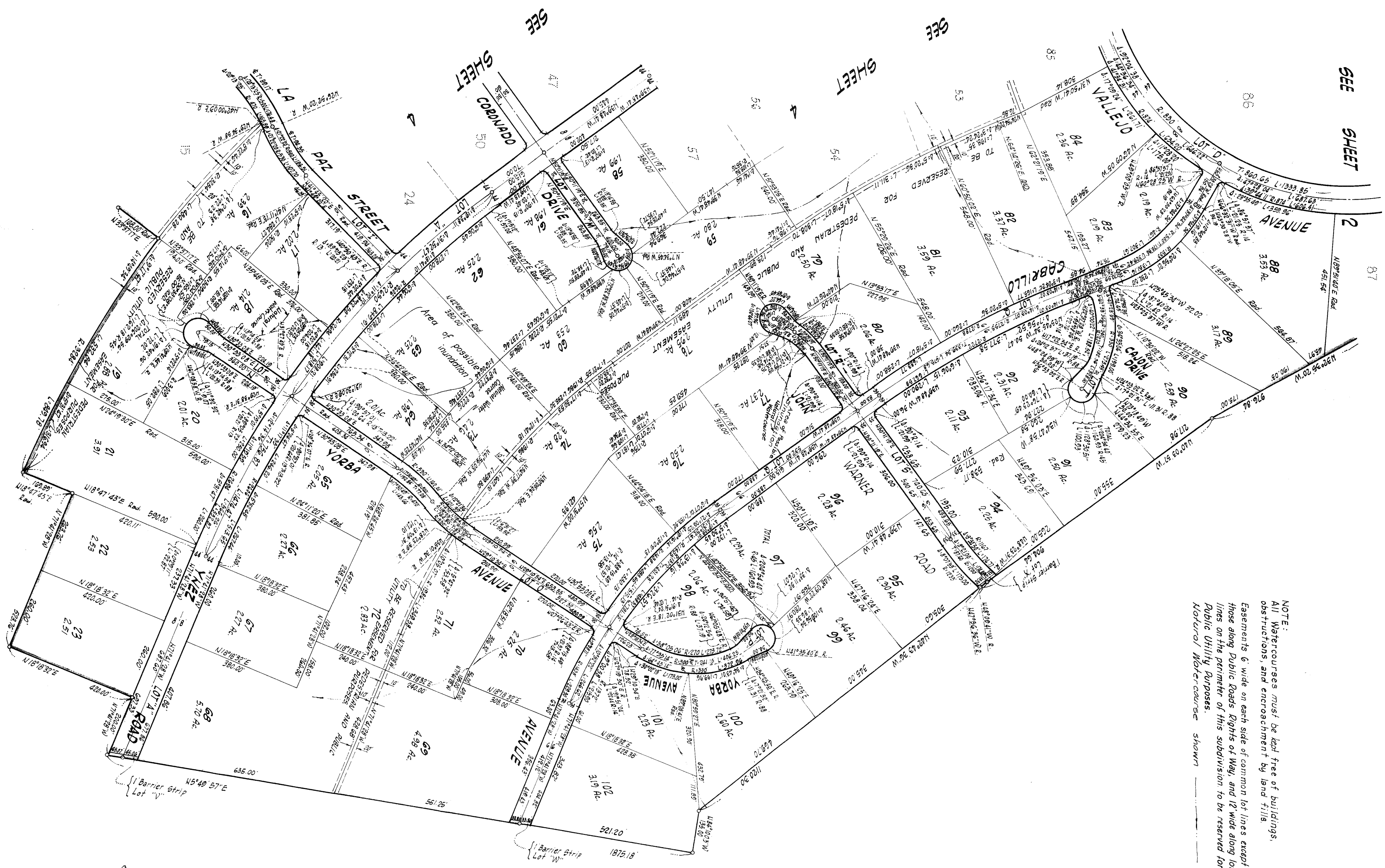


NOTE:
All Watercourses must be kept free of buildings, obstructions, and encroachment by land fills.
Easements 6' wide on each side of common lot lines, except those along Public Roads, Rights of Way, and 12' wide along lot lines on the perimeter of this subdivision to be reserved for Public Utility Purposes.

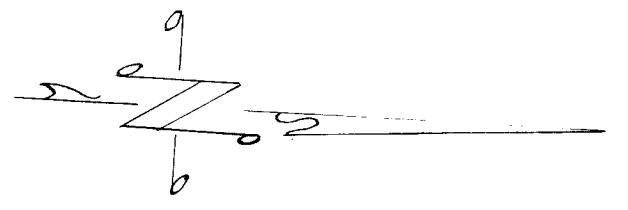
- GENERAL NOTES:**
1. Set 2x2" Redwood stakes painted white and tagged L.S. 2602 at all lot corners unless otherwise noted.
 2. Building setback to conform to existing zoning.
 3. All monuments set according to County Ordinance No. 461 Granted No. 42.
 4. Indicated monuments found size and description as noted.
 5. Indicates 1/4" iron pipe set and tagged L.S. 2602
 6. This tract has 102 lots, plus lot 5, A to Z, inclusive, and lot "A-A".
 7. PUE - Public Utilities Easement.

BASIS OF BEARINGS
The bearing U48°15'25" N of the E of Mac Lead Road as shown on Tract U4334 M.B. 54 pages 25-30 of Riverside County was used as basis of bearings for this map.
All bearings are grid. All distances are actual except as noted.
Grid Factor - 0.9998736
Average Latitude U33°31'20"
Average Elevation 2000'
California Co-ordinate System - Zone C

In The County of Riverside TRACT No. 3552 BEING A SUBDIVISION OF A PORTION OF THE RANCHO TEMECULA



NOTE:
 All Watercourses must be kept free of buildings, obstructions, and encroachment by land fills.
 Easements 6' wide on each side of common lot lines except those along Public Roads Rights of Way, and 12' wide along lot lines on the perimeter of this subdivision to be reserved for Public Utility Purposes.
 Natural Watercourse shown



MB 56/65

TRACT NO. 3552

BEING A SUBDIVISION OF A PORTION OF THE RANCHO TEMECULA

NOTE:
 All Watercourses must be kept free of buildings, obstructions, and encroachment by land fills.
 Easements 6 wide on each side of common lot lines except those along Public Roads Rights of Way and 12' wide along lot lines on the perimeter of this subdivision to be reserved for Public Utility Purposes.
 Natural Watercourse shown

SEE SHEET 2

SEE SHEET 3

